

PICTURESQUE DISTRICTS UPON THE MIDLAND RAILWAY

Illustrated Guide

— TO —

SKIPTON GRASSINGTON

AND DISTRICT

Issued under
the
Patronage
of
The Skipton
Urban District
Council.



HIGH STREET, SKIPTON.

Mr. THOMAS FATTORINI,
Manufacturing Jeweller and Diamond
Mounter,
Caroline Square, Skipton.

AMONG the principal business houses in Skipton, we have special pleasure in mentioning the firm of Mr. Thomas Fattorini, whose handsome premises in High Street are an ornament to the town. Established in 1832 by the grandfather of the present proprietor, the business has now been in existence for over sixty years and has always commanded a large share of the patronage of the town and county. The firm can also claim customers in nearly every part of England, whilst Ireland, Wales, and America

comprises everything usually included under the head of jewellery, at least £20,000 worth of goods being offered for choice. Where everything is excellent it is difficult to say what constitutes the specialities of the business, but Mr. Fattorini has long devoted particular attention to the manufacture of English lever watches and to thoroughly high-class jewellery. Over 1000 watches are kept in stock and many thousands have been sold, the purchasers being always ready to testify to their time-keep- and good wearing qualities. In the department of diamond jewellery, which is one of the most important specialities of the business, the finest selection of crescents, bangles, and brooches is maintained, together with a large stock of very beautiful rings set with lustrous diamonds,



furnish regular orders for execution by Mr. Fattorini.

The present commodious building dates from 1863, but has undergone enlargement (in 1895) necessitated by the great increase in the wholesale department. It now consists of a very handsome corner structure of three storeys devoted to the different branches of the business. The show-rooms and stock-rooms are well fitted and tastefully arranged, and the extensive workshops are supplied with all appliances and requisites of the trade. There are three very attractive show windows which make a really brilliant display in all the best lines of high-class jewellery, gold and silver watches, clocks, silver plate, gold and diamond rings, etc., the stock throughout being of a comprehensive and sterling character. The large assortment offered to the customer for his or her selection

rubies, emeralds, sapphires, and other oriental gems. Artistic design, perfect workmanship, and great durability have ever been the characteristics of goods emanating from this house. We should add that Mr. Fattorini publishes several catalogues fully and tastefully illustrated, in which his more important lines are shown, the lists including athletic sports prizes, superb presentation goods, together with the newest styles in watches, chains, bracelets, etc., artistic gold jewellery, dress, engagement, wedding, and other rings, solid silver novelties in many kinds, electro-plate, cutlery, a large selection of clocks, and fancy articles in great variety, specially adapted for wedding presents and ordinary gifts. For further particulars in all departments, address "Fattorini, Skipton," this being sufficient for either letters or telegrams.

Messrs. B. PORRI & SON,
Glass, China, and Earthenware Merchants,
Swadford Street and Coach Street,
Skipton.

THE first position in the above important department of household requisites, as regards the "Capital of Craven," belongs without question to Messrs. B. Porri & Son, who have been for three generations established in

sets of newest designs, with many attractive novelties in English and Continental china and glass, form a large part of the wares offered for choice, but it is needless to say that all the regular and recognized kinds are stocked also. Royal Worcester porcelain, Crown Derby, Limoges, Dresden, Doulton's, Coupland's, and similar wares are exhibited, thoroughly sound taste and good judgment being evident in their selection. Staffordshire ware constitutes one of the main staples dealt in, excellent dinner sets being offered from 11s. upward, and



the business. Their present premises in Swadford Street, occupied for about eight years, are centrally and conveniently situated near Belmont Bridge, the building having a corner frontage affording an excellent window display. The stocks held are admirably arranged and very comprehensive in character, including all the usual lines of glass, china, and earthenware, the ordinary and serviceable kinds being always kept in large quantities as well as the more costly and ornamental articles. Speaking generally, cut and engraved glass, breakfast, tea, and dinner services, dessert services and toilet

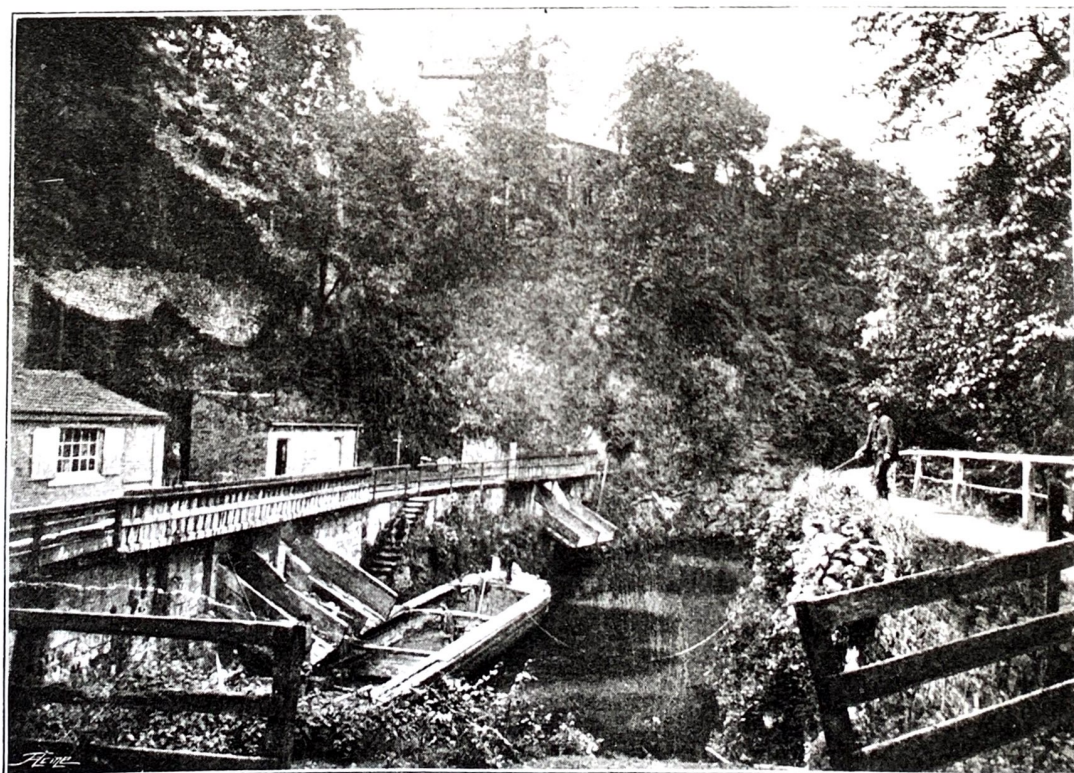
toilet sets from 7s. 6d. It is not too much to say that householders may supply themselves with every kind of useful and ornamental article in the Messrs. Porri's establishment at the most moderate prices consistent with good quality, the high reputation so long enjoyed by the house being fully maintained by its present representatives. A large and well-established retail trade is done in the town and district, and the firm have a considerable wholesale connection as well, this department of the business being carried on at their warehouse in Coach Street.



Canal Bank, Skipton.



Promenade, Gargrave Road, Skipton.



Mill Bridge, Skipton.

